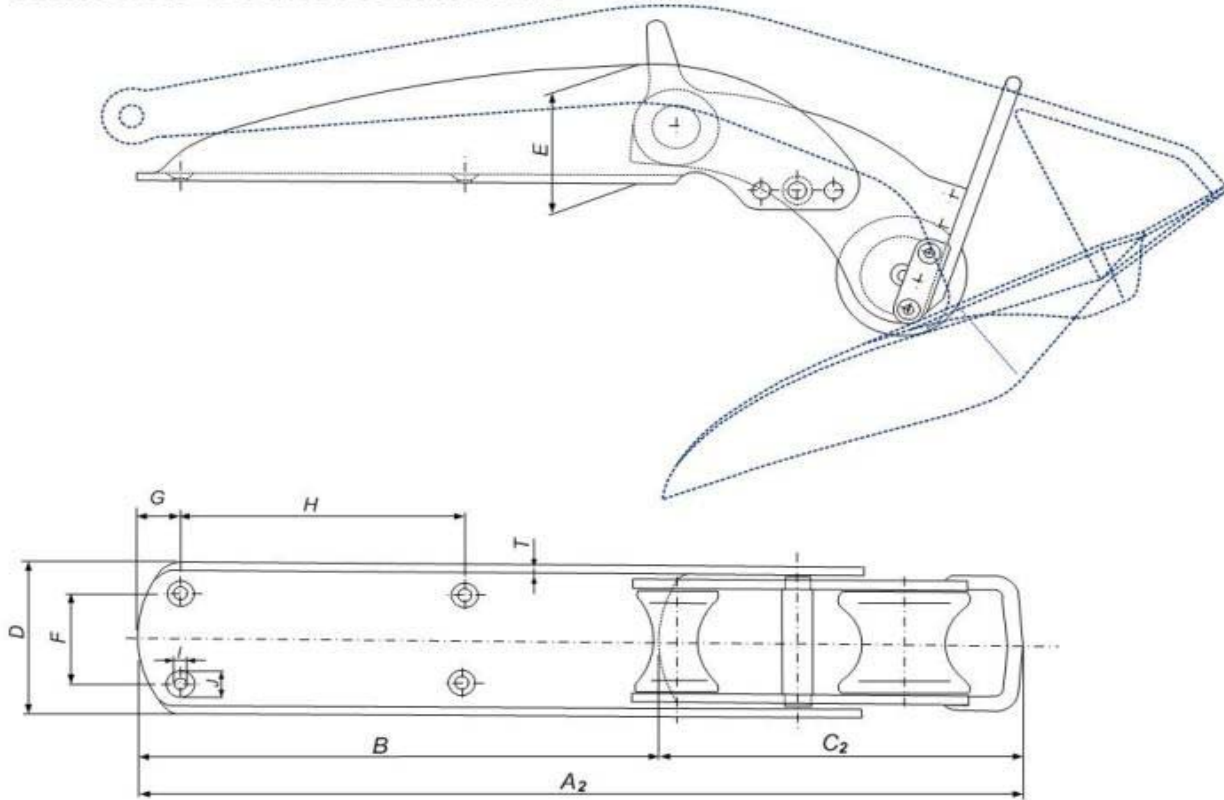


ARTICULATED ULTRA BOW ROLLER



ANCHOR (kg)		8	12	16	21	27	35	45	60	80	100	130	160	200
A2	S	316.4	362.2	398.6	436.5	474.6	517.5	562.7	619.3	681.7	734.3	801.4	858.8	925.2
	M	406.0	464.8	511.5	560.1	609.0	664.0	722.0	794.7	874.7	942.2	1028.4	1102.1	1187.2
	L	549.4	628.9	692.2	757.9	824.1	898.6	977.1	1075.4	1183.6	1275.0	1391.6	1491.3	1606.5
B	S	149.4	171.0	188.2	206.1	224.1	244.3	265.7	292.4	321.9	346.7	378.4	405.5	436.8
	M	239.0	273.6	301.1	329.7	358.5	390.9	425.0	467.8	514.9	554.7	605.4	648.7	698.8
	L	382.4	437.7	481.8	527.5	573.6	625.4	680.1	748.5	823.9	887.5	968.6	1038.0	1118.1
C2		167.0	191.2	210.4	230.4	250.5	273.1	297.0	326.9	359.8	387.6	423.0	453.3	488.3
D		72.6	83.1	91.5	100.1	108.9	118.7	129.1	142.1	156.4	168.5	183.9	197.1	212.3
E		58.0	66.4	73.1	80.0	87.0	94.9	103.1	113.5	125.0	134.6	146.9	157.4	169.6
F (*)														
G (*)														
H (*)														
I (*)		7.0	7.0	7.0	9.5	9.5	11.5	11.5	11.5	14.0	14.0	14.0	16.0	16.0
J (*)		13.0	13.0	13.0	17.2	17.2	21.5	21.5	21.5	26.0	26.0	26.0	29.0	29.0
T		4.0	4.0	4.0	5.0	5.0	6.0	6.0	6.0	8.0	8.0	8.0	10.0	10.0

(*) : Dimensions are in mm.

(*) : The bow roller chassis is manufactured without holes to be drilled by the customer or it is manufactured with predrilled and counter sunk if the dimensions of "F,G,H" are provided with order.



Offices:
Quickline USA
8700 Warner Ave #110
Fountain Valley, CA 92708

714-843-6964
714-843-6906 FAX
sales@quickline.us